

FIBER RACEWAY

InBERG



ABOUT THE FIBER RACEWAY

As an expertise in offering solutions in data centers and telecom service providers, InBERG is offering a wide range of products in cable management, connectivity solutions and cabinets etc., in order to fulfill nowadays the needs of high speed networks.

InBERG developed our Fiber Raceway which manages massive fiber patch cords and multi-fiber cables. Our Fiber Raceway consists of various components, they are in the size of 100mm x 120mm and 100mm x 240mm. The eye-catching color and non-toxic material meet the technical standards in the data centers and telecom exchanges.

InBERG FIBER RACEWAY

InBERG Fiber Raceway makes sure your optical fiber is running on a well-protected containment. It is an assembly of full ranges of components which included straight sections, fittings with different shapes, and fiber cable exits with different approaches of conditions.

It is NOT ONLY a cable containment that deploys at the data centers or telecom exchanges, its component is made of the high quality of materials with different safety certifications and test reports issued by worldwide test laboratory. The feature of bending radius protection applies throughout all the components in the whole system.

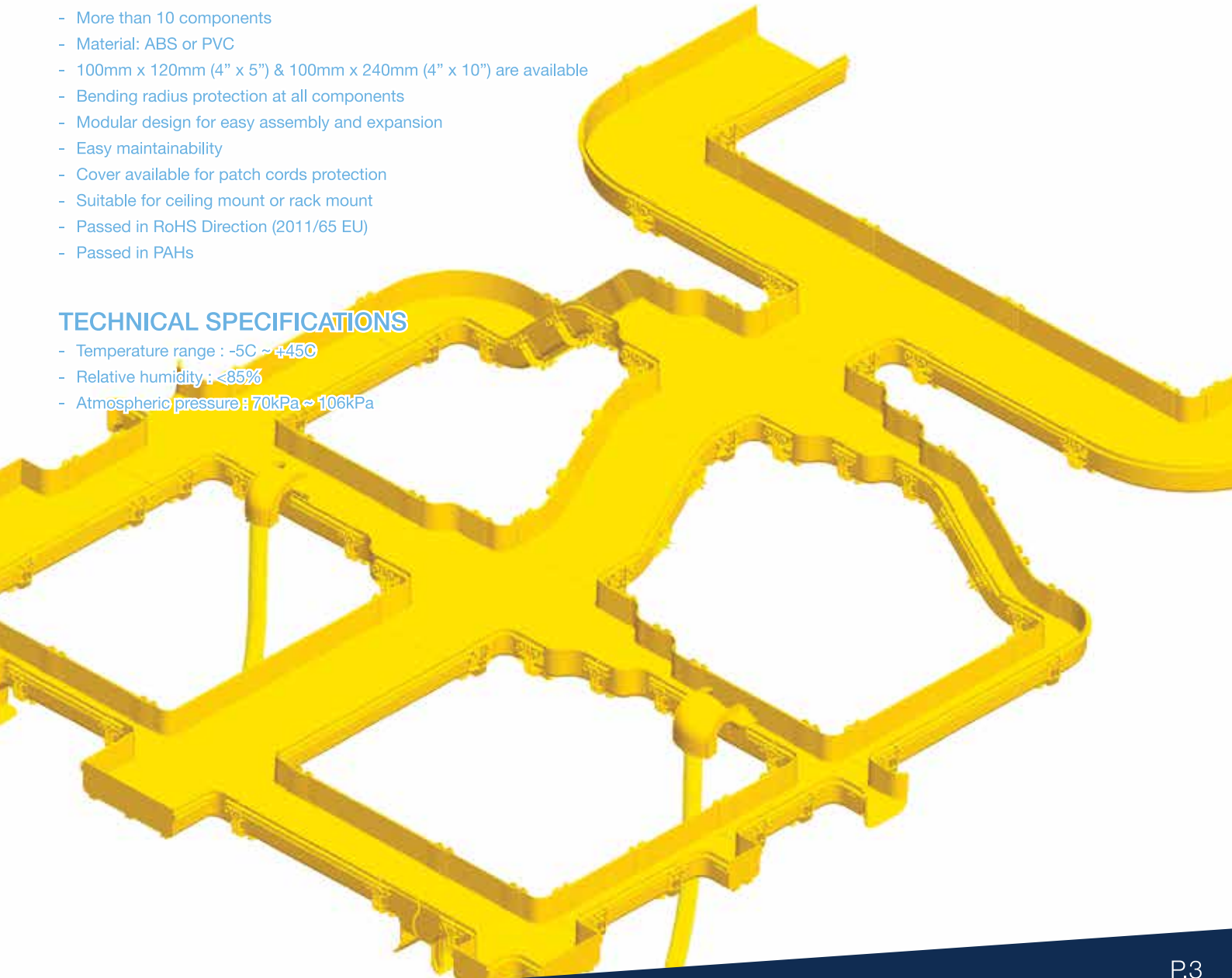
With the thousands of optical fiber running at the data centers or telecom exchanges, we provide the raceway with the best cable management for the optical fibers to travel along between the connections across those switches or patch panels. We ensure the optimum network performance for your connections.

FEATURES

- More than 10 components
- Material: ABS or PVC
- 100mm x 120mm (4" x 5") & 100mm x 240mm (4" x 10") are available
- Bending radius protection at all components
- Modular design for easy assembly and expansion
- Easy maintainability
- Cover available for patch cords protection
- Suitable for ceiling mount or rack mount
- Passed in RoHS Directive (2011/65 EU)
- Passed in PAHs

TECHNICAL SPECIFICATIONS

- Temperature range : -5C ~ +45C
- Relative humidity : <85%
- Atmospheric pressure : 70kPa ~ 106kPa



Intertek
 Hong Kong Government Recognized Service Supplier
 Approved Laboratory of The Woodmark Company

Members of:
 American National Standards Institute
 American Society for Testing and Materials
 British Standards Institute

Hong Kong Association for Testing, Inspection and Certification Limited
 Hong Kong Toys Council


Test Report Number: HKGC00001889

Company: **InBERG LIMITED**
 MAXIMILIANSTRASSE 35A,
 80539 MUNICH, GERMANY

Date: Nov 17, 2014

Sample Description:
 One (1) piece of submitted sample said to be:
 Item Name : Fiber Trunking For Optical Fiber Patch Cords
 Model No. : FR12-200, FR12-200-C, FR12-JNR, FR12-HB90, FR12-HB90-C,
 FR12-HT, FR12-HT-C, FR12-HX, FR12-HX-C, FR12-VD45,
 FR12-VD45-C, FR12-VR45, FR12-VR45-C, FR12-HB45,
 FR12-END, FR12-S, FR-WF, FR-WF-L, FR24-200, FR24-200-C,
 FR24-JNR, FR24-HB90, FR24-HB90-C, FR24-HT, FR24-HT-C,
 FR24-HX, FR24-HX-C, FR24-VD45, FR24-VD45-C, FR24-VR45,
 FR24-VR45-C, FR24-HB45, FR24-END, FR24-VTD, FR24-HT12,
 FR24-HT12-C, FR24-R12, FR24-R12-C

Buyer : InBERG LIMITED



Tests conducted:
 As requested by the applicant, refer to attached page(s) for details.

Conclusion:
 Requirement : **Result**
 (1) RoHS Directive (2011/65/EU) : **Pass**
 - Chemical test

For and on behalf of :
 Intertek Testino Services HK Ltd.
 Ken Chan
 Senior Manager

Intertek Testing Services Hong Kong Ltd.
 2/F, Garment Centre, 576 Castle Peak Road, Kowloon, Hong Kong.
 Tel: (852) 2173 8888 Fax: (852) 27 99 1903 Website: www.intertek.com

Page 1 of 3

Intertek
 Hong Kong Government Recognized Service Supplier
 Approved Laboratory of The Woodmark Company

Members of:
 American National Standards Institute
 American Society for Testing and Materials
 British Standards Institute

Hong Kong Association for Testing, Inspection and Certification Limited
 Hong Kong Toys Council


Test Report Number: HKGC00001888

Company: **InBERG LIMITED**
 MAXIMILIANSTRASSE 35A,
 80539 MUNICH, GERMANY

Date: Nov 17, 2014

Sample Description:
 One (1) piece of submitted sample said to be:
 Item Name : Fiber Trunking For Optical Fiber Patch Cords
 Model No. : FR12-200, FR12-200-C, FR12-JNR, FR12-HB90,
 FR12-HB90-C, FR12-HT, FR12-HT-C, FR12-HX,
 FR12-HX-C, FR12-VD45, FR12-VD45-C, FR12-VR45,
 FR12-VR45-C, FR12-HB45, FR12-END, FR12-S, FR-WF,
 FR-WF-L, FR24-200, FR24-200-C, FR24-JNR, FR24-HB90,
 FR24-HB90-C, FR24-HT, FR24-HT-C, FR24-HX, FR24-HX-C,
 FR24-VD45, FR24-VD45-C, FR24-VR45, FR24-VR45-C,
 FR24-HB45, FR24-END, FR24-VTD, FR24-HT12,
 FR24-HT12-C, FR24-R12, FR24-R12-C

Brand Name : InBERG Fiber Raceway
 Buyer : InBERG LIMITED



Tests conducted:
 As requested by the applicant, refer to attached page(s) for details.

Conclusion:
 Requirement : **Result**
 (1) GS Certification : **Pass**
 - Polycyclic Aromatic Hydrocarbons (PAHs)

For and on behalf of :
 Intertek Testino Services HK Ltd.
 Ken Chan
 Senior Manager

Intertek Testing Services Hong Kong Ltd.
 2/F, Garment Centre, 576 Castle Peak Road, Kowloon, Hong Kong.
 Tel: (852) 2173 8888 Fax: (852) 27 99 1903 Website: www.intertek.com

Page 1 of 3

InBERG appointed a third party company, Intertek to perform the RoHS test on its fiber raceway, which is the short form of Restriction of Hazardous Substances, and it is specific to the European Union. This is the law revolves the handling of hazardous materials, ranging from the manufacturing to the disposal of the material.

RoHS is often referred as the 'lead-free directive', but actually it restricts the use of the following six substances:

- Lead (Pb)
- Mercury (Hg)
- Cadmium (Cd)
- Haxavalent chromium (Cr6+)
- Polybrominated biphenyls (PBB)
- Polybrominated diphenyl ether (PBDE)

InBERG fiber raceway tested with the presence of these chemical compounds and components, and we successful passed the testing and certified.

The Federal Republic of Germany asked the European Commission to propose a restriction of a limit of 0.2 mg/kg for PAHs in all articles which could be used by consumers. Consumer products containing one or more polycyclic aromatic hydrocarbons (PAHs) are considered severely hazardous based on their carcinogenic and mutagenic properties, as well as their potential for being toxic to reproduction.

InBERG Fiber Raceway is classified as industrial product, but in order to make sure our product is safe in Germany and Europe, InBERG appointed Intertek to perform the test for PAHs for GS Certification. The testing method is referred to the document ZEK 01.4-08 issued by Central Experience Exchange Office (ZEK), by solvent extraction and determined by GC-MSD.

The detection limit = 0.2 mg/kg. And we successfully passed the certified.

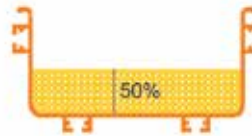
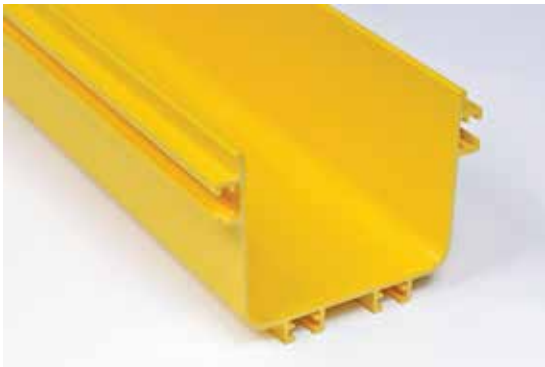


PART USAGE

Fiber Trunk-120

Part No. : FR12-200

Dimension			Fiber Loading Capacity	
Height	Width	Length	2mm Fiber	3mm Fiber
100	120	2000		

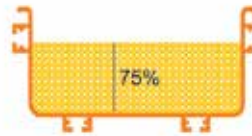


2mm Fiber

955

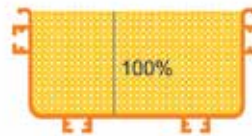
3mm Fiber

424



1433

636



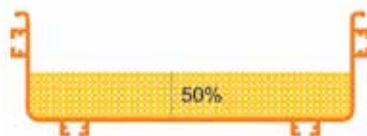
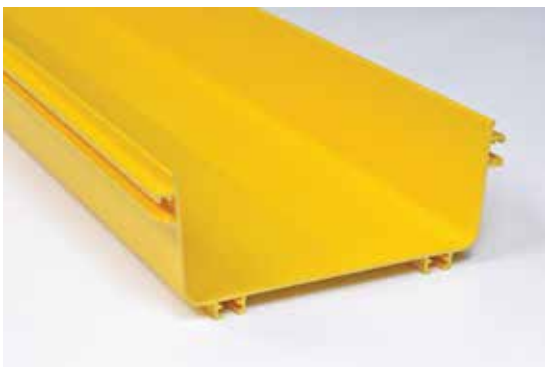
1910

848

Fiber Trunk-240

Part No. : FR24-200

Dimension			Fiber Loading Capacity	
Height	Width	Length	2mm Fiber	3mm Fiber
100	240	2000		

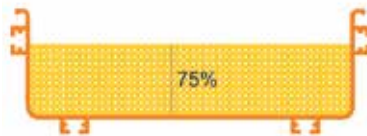


2mm Fiber

1910

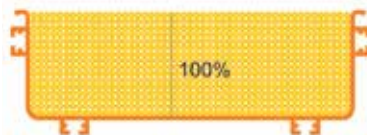
3mm Fiber

849



2866

1273



3821

1698

PART USAGE



Joiner



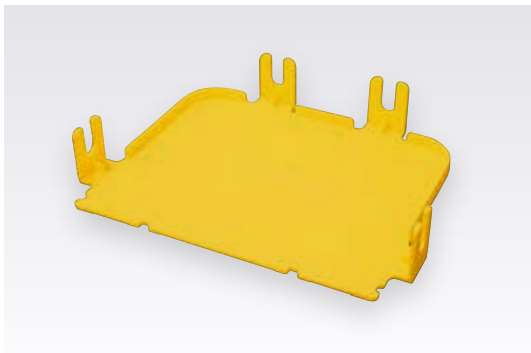
Horizontal Bend 90°



Horizontal T



Horizontal Cross



End Cover

ORDERING INFORMATION

Joiner	FR12-JNR	100mmH x 120mmW	Horizontal Bend 90°	FR12-HB90	100mmH x 120mmW
	FR24-JNR	100mmH x 240mmW		FR24-HB90	100mmH x 240mmW
Horizontal T	FR12-HT	100mmH x 120mmW	Horizontal Cross	FR12-HX	100mmH x 120mmW
	FR24-HT	100mmH x 240mmW		FR24-HX	100mmH x 240mmW
End Cover	FR12-END	100mmH x 120mmW			
	FR24-END	100mmH x 240mmW			

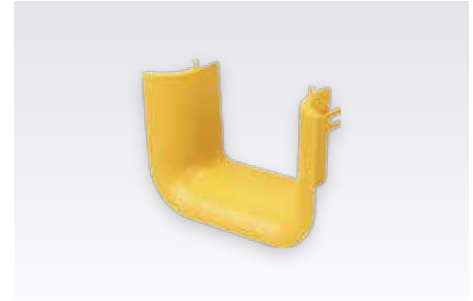
PART USAGE



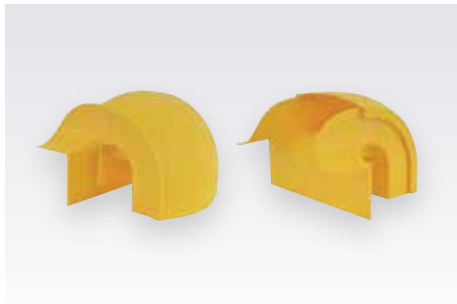
Vertical Drop 45°



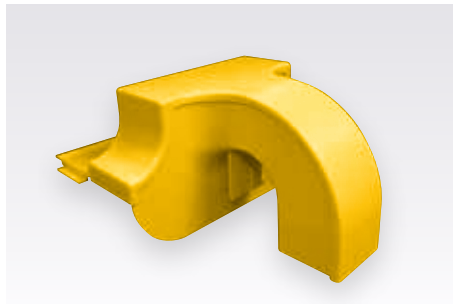
Vertical Up 45°



120 Trumpet Skirt



Water Fall (90mm / 130mm)



Water Fall Plus



**Water Fall Plus -
Fiber Trunk with Cover**



Water Fall Plus - Joiner



Water Fall Plus - Flexible Tube

ORDERING INFORMATION

Vertical Drop 45°

FR12-VD45 100mmH x 120mmW
FR24-VD45 100mmH x 240mmW

Water Fall

FR-WF-90 Opening 90mmW
FR-WF-130 Opening 130mmW

Water Fall Plus - Joiner

FR06-JNR 60mmW

Vertical Up 45°

FR12-VR45 100mmH x 120mmW
FR24-VR45 100mmH x 240mmW

Water Fall Plus

FR12-WFP with 120mmW Fiber trunk Cover
FR24-WFP with 240mmW Fiber trunk Cover

Water Fall Plus - Flexible Tube

FR-FT Flexible Tube with Kit

120 Trumpet Skirt

FR12-TS

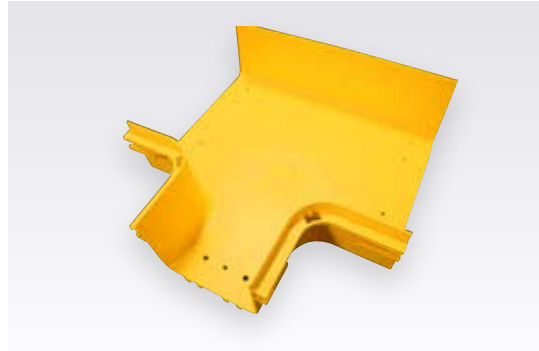
Water Fall Plus - Fiber Trunk with Cover

FR06-200 60mmW

PART USAGE



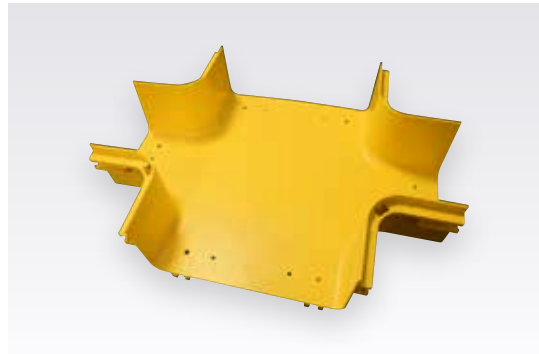
240 to 120 Vertical T



240 to 120 Horizontal T



240 to 120 Reducer



240 to 120 Horizontal Cross



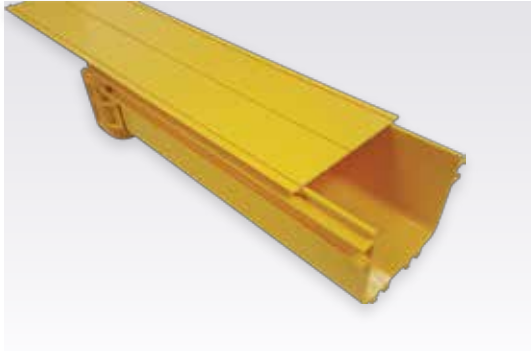
Ladder Rack Support Kit

ORDERING INFORMATION

240 to 120 Vertical T FR24-VTD
 240 to 120 Reducer FR24-R12
 Ladder Rack Support Kit FR12-LRK
 FR24-LRK

240 to 120 Horizontal T FR24-HT12
 240 to 120 Horizontal Cross FR24-HX12

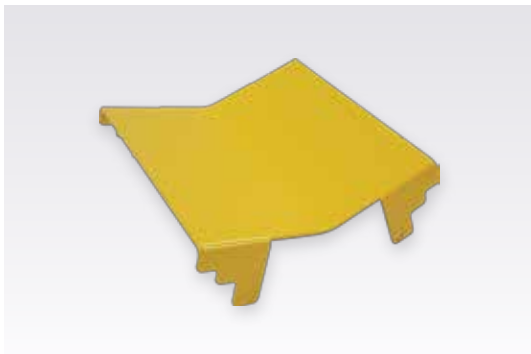
PART USAGE



Cover for Fiber Trunk



Cover for Vertical Drop 45° (Metal)



Cover for Vertical Up 45° (Metal)



Cover for 240 to 120 Reducer (Metal)

ORDERING INFORMATION

Cover for Fiber Trunk

FR12-200-C
FR24-200-C

Cover for Vertical Up 45° (Metal)

FR12-VR45-C
FR24-VR45-C

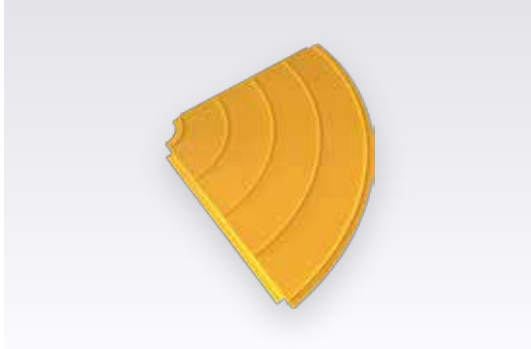
Cover for Vertical Drop 45° (Metal)

FR12-VD45-C
FR24-VD45-C

Cover for 240 to 120 Reducer (Metal)

FR24-R12-C

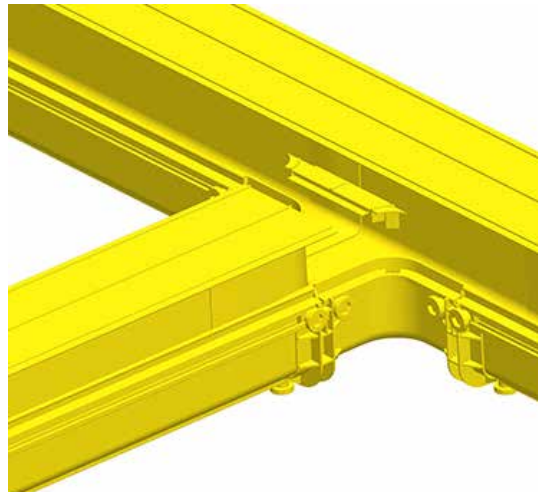
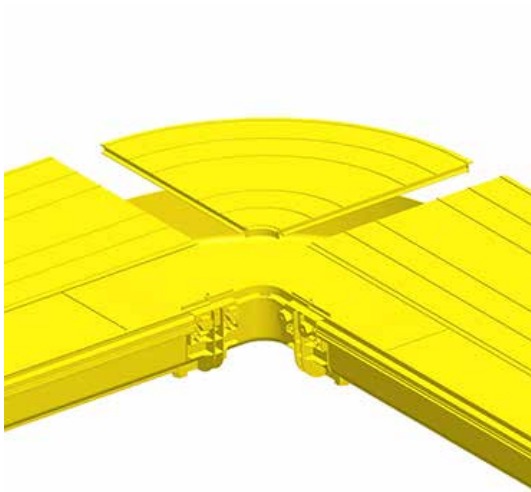
PART USAGE



Cover for Horizontal Bend 90°



Cover for Horizontal T & Cross



ORDERING INFORMATION

Cover for Horizontal Bend 90°

FR12-HB90-C
FR24-HB90-C

Cover for Horizontal T & Cross

FR12-TX-C
FR24-TX-C

CONTACT INFO

Germany Address:

Maximilianstrasse 35a, 80539 Munich
Phone: +49 89 420958049

Hong Kong Address:

Suite 813-814, Cyberport 1,
100 Cyberport Road, Hong Kong
Tel: +852 8108 8168
Fax: +852 8108 8166
Email: info@inberg.com
Website: <http://www.inberg.com>



- Efficiency
- Environmental
- Innovation
- Reliability
- Security



www.inberg.com